

Critical Environment Technologies Canada Inc.

Unit 145, 7391 Vantage Way
Delta, BC, V4G 1M3, Canada

TF: +1.877.940.8741
T: +1.604.940.8741
F: +1.604.940.8745

www.critical-environment.com



Rev. K | 2015.09 | For instrument firmware version 3.0 & up.



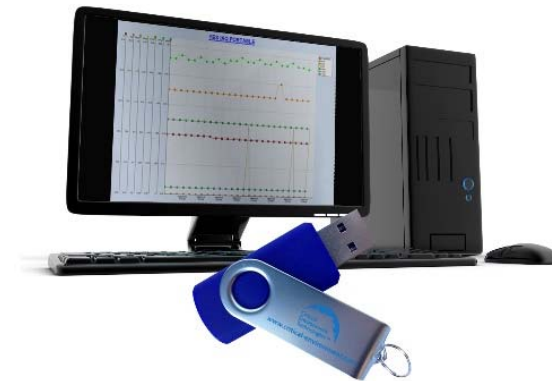
TABLE OF CONTENTS

- 1 POLICIES.....4**
 - 1.1 Important Note 4
 - 1.2 Warranty Policy..... 4
 - 1.3 Service Policy 5
 - 1.4 Copyrights 6
 - 1.5 Disclaimer 6
 - 1.6 Revisions 6
- 2 INTRODUCTION.....8**
 - 2.1 General Description 8
 - 2.2 Contents 9
- 3 INSTRUMENT SPECIFICATIONS10**
 - 3.1 General Overview 10
 - 3.2 Key Features 10
 - 3.3 Technical Specifications 11
 - 3.4 Enclosure Dimensions 13
- 4 SENSOR SPECIFICATIONS.....14**
 - 4.1 Sensor Configuration Notes..... 14
 - 4.2 Plug & Play Sensor Gas Types..... 15
- 5 FEATURES & FUNCTIONS17**
 - 5.1 Front View 17
 - 5.2 Bottom View..... 18
 - 5.3 Left Side View..... 18
 - 5.4 Rear View 20
 - 5.5 Top View with Sensor Cover..... 20
 - 5.6 Top View Diffusion vs Pump Model 20
- 6 OPERATION22**
 - 6.1 Overview..... 22
 - 6.2 Switching Instrument On & Off..... 22
 - 6.3 Battery & Battery Warnings 23

13.6 YES Viewer Software

Product Code: YES-SFTWRE

The YES Viewer Software is a proprietary data logging management software program developed by CETCI for the battery powered, portable IAQ monitors. YES Viewer can be used with the YESAIR and YES Plus LGA air quality monitoring instruments manufactured by CETCI. The software is available on a 512 MB USB flash drive.



(Computer and monitor not included.)

NOTE:

1. Remote sampling probe is for gases only. Temperature and RH sensors are mounted on top of the YESAIR.

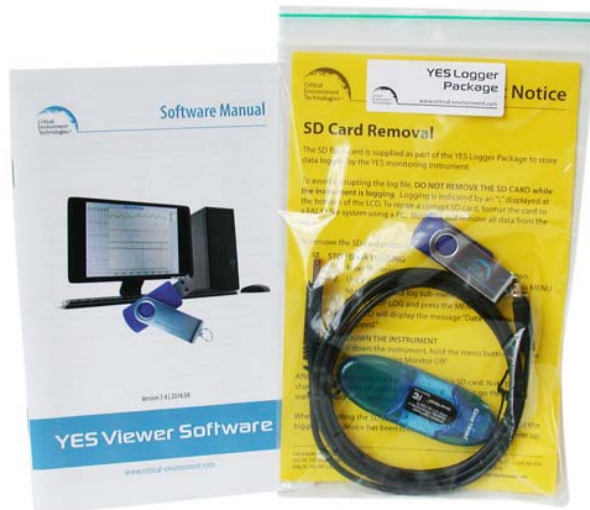
13.5 YES Logger Package

Product Code: YESAIR-LGRPKG

YES logger package for YESAIR or YES Plus LGA contains a 2GB SD memory card, 6 foot USB cable, USB multi card reader, 512 MB USB flash drive with the YES Viewer Software and the Yes Viewer Software Manual.

NOTE:

1. The YESAIR can only accommodate up to a 2GB memory card. Do not try to use a larger capacity memory card. Also, if you remove or insert the card without powering the unit OFF, this will cause data corruption and the card will need to be reformatted.



6.4 Main Menu Function 24

7 MENU FUNCTION DETAILS.....25

7.1 Calibrate Menu 25
 7.2 Settings Menu..... 26
 7.3 Datalog Menu 29
 7.4 Alarm Menu 32
 7.5 Info Menu..... 33
 7.6 USB Menu 34

8 CALIBRATION PROCEDURES34

8.1 Requirements & Cautions 34
 8.2 Calibration Process: Zero 35
 8.3 Calibration Process: 3-Point Span 37
 8.4 Calibration Process: 1-Point Span 38

9 ADDING OR CHANGING PLUG & PLAY SENSORS39

10 INSTALLING THE YES VIEWER SOFTWARE42

11 MAINTENANCE.....43

12 TROUBLE SHOOTING.....43

13 ACCESSORIES44

13.1 Hard Shell Carrying Case (Extra Durable) 44
 13.2 Extended Operation (Short Term) External Battery 44
 13.3 Extended Operation (Long Term) External Battery 45
 13.4 Handheld Probe 45
 13.5 YES Logger Package 46
 13.6 YES Viewer Software 47

1 POLICIES

1.1 Important Note

Read and understand this manual prior to using this instrument. Carefully read the warranty policy, service policy, notices, disclaimers and revisions on the following pages.

This instrument should be inspected and calibrated regularly by a qualified and trained technician.

This instrument has not been designed to be intrinsically safe. For your safety, **do not** use it in classified hazardous areas (explosion-rated environments).

INSTRUMENT SERIAL NUMBER:

PURCHASE DATE:

PURCHASED FROM:

1.2 Warranty Policy

Critical Environment Technologies Canada Inc. (the manufacturer) warrants this instrument, (excluding sensors, battery packs, batteries, pumps and filters), to be free from defects in materials and workmanship for a period of **two years from the date of purchase from our facility**. The sensors have a warranty period of **one year on a pro-rated basis from the date of purchase from our facility**. If the product should become defective within this warranty period, we will repair or replace it at our discretion.

The warranty status may be affected if the instrument has not been used and maintained as per the instructions in this manual or has been abused, damaged or modified in any way. This instrument is only to be used for purposes stated herein. The manufacturer is not liable for auxiliary interfaced equipment or consequential damage.

Due to ongoing research, development and product testing, the manufacturer reserves the right to change specifications without notice. The information

NOTE:

- YESAIR must be ordered with this accessory. It cannot be installed in the field. Instruments in use can be shipped back to be factory retrofitted.

External battery pack, plugs into rear of YESAIR.



13.3 Extended Operation (Long Term) External Battery

Product Code: YES-AIR BATT EXT

Provides enough battery power for approximately 7 to 10 days of continuous (24 hours per day) operating time for YESAIR when used in areas where there is no access to power. This battery option is installed in a hard shell carrying case with its own battery charger and battery monitoring circuit to maximize battery life.

NOTE:

- Because of the size of this lead acid battery, the recharge time is approximately 26-hours.

13.4 Handheld Probe

Product Code: YES-HHPROBE-10

An optional handheld sampling probe is available with the YESAIR Pump model. The probe has a 10" wand and 30" of tubing that fits onto the nozzle and allows you to reach into and sample areas that are difficult to access.



13 ACCESSORIES

13.1 Hard Shell Carrying Case (Extra Durable)

Product Code: 6010.20

The YESAIR comes standard in a hard shell, foam-lined carrying case that is reasonably durable for everyday use. An alternate hard shell, foam-lined, carrying / transport case is available for purchase that offers greater protection from the elements and potential jostling and crushing during transporting and day-to-day handling.



13.2 Extended Operation (Short Term) External Battery Pack

Product Code: YES-AIR BATT OPTION

To increase the operating time to almost double, the external battery pack is attached to the YESAIR and comes with rechargeable batteries installed from the factory. The wall adapter may be used to recharge the rechargeable batteries in the external battery pack at the same time as recharging the rechargeable batteries in the YESAIR unit. *Remember: you must use the same battery type in both locations and make sure the menu is set to that battery type.* If you want to use alkaline batteries, you must change the menu setting and ensure alkaline batteries are installed in the external battery pack and the YESAIR unit.

For configurations that include two high powered sensors such as two infrared sensors or one infrared and one combustible sensor, an external battery pack should be used.

The external battery pack attaches to rear of YESAIR with velcro and plugs into a port at rear of instrument.

contained herein is based on data considered accurate. However, no warranty is expressed or implied regarding the accuracy of this data.

All goods must be shipped to the manufacturer by prepaid freight. All returned goods must be pre-authorized by obtaining a return merchandise authorization (RMA) number. Contact the manufacturer for a number and procedures required for product transport.

1.3 Service Policy

Critical Environment Technologies Canada Inc. (CETCI) maintains an instrument service facility at the factory. Some CETCI distributors / agents may also have repair facilities; however, CETCI assumes no liability for service performed by anyone other than CETCI personnel.

Repairs are warranted for 90 days after date of shipment (sensors, pumps, filters and batteries have individual warranties).

Should your instrument require non-warranty repair, you may contact the distributor from whom it was purchased or you may contact CETCI directly.

Prior to shipping equipment to CETCI, contact our office for an RMA #. All returned goods must be accompanied with an RMA number.

If CETCI is to do the repair work, you may send the instrument, prepaid, to:

Attention: Service Department
Critical Environment Technologies Canada Inc.
Unit 145, 7391 Vantage Way
Delta, BC, VGN 1M3

Always include your Returned Merchandise Authorization (RMA) number, address, telephone number, contact name, shipping / billing information, and a description of the defect as you perceive it. You will be contacted with a cost estimate for expected repairs, prior to the performance of any service work.

For liability reasons, CETCI has a policy of performing all needed repairs to restore the instrument to full operating condition.

Pack the equipment well (in its original packing if possible), as we cannot be held responsible for any damage incurred during shipping to our facility.

1.4 Copyrights

This manual is subject to copyright protection; all rights are reserved. Under international and domestic copyright laws, this manual may not be copied or translated, in whole or in part, in any manner or format, without the written permission of CETCI.

All software which CETCI utilizes and / or distributes holds a proprietary interest and is also subject to copyright protection and all rights are reserved. No party may use or copy such software in any manner or format, except to the extent that CETCI grants them a license to do so. IF THIS SOFTWARE IS BEING LOADED ONTO MORE THAN ONE COMPUTER, EXTRA SOFTWARE LICENSES MUST BE PURCHASED.

Reference important notes under [1.1 Important Notes](#) and [6.2 Switching Instrument On / Off](#).

1.5 Disclaimer

Under no circumstances will CETCI be liable for any claims, losses or damages resulting from or arising out of the repair or modification of this equipment by a party other than CETCI Service Technicians, or by operation or use of the equipment other than in accordance with the printed instructions contained within this manual or if the equipment has been improperly maintained or subjected to neglect or accident. Any of the foregoing will void the warranty.

Under most local electrical codes, low voltage wires cannot be run within the same conduit as line voltage wires. It is CETCI policy that all wiring of our products meet this requirement. It is CETCI policy that all wiring be within properly grounded (earth or safety) conduit.

1.6 Revisions

This manual was written and published by CETCI (the manufacturer). The manufacturer makes no warranty or representation, expressed or implied including any warranty of merchantability or fitness for purpose, with respect to this manual.

All information contained in this manual is believed to be true and accurate at the time of printing. However, as part of its continuing efforts to improve its products and their documentation, the manufacturer reserves the right to make changes at any time without notice. Revised copies of this manual can be obtained by contacting CETCI or visiting www.critical-environment.com.

Should you detect any error or omission in this manual, please contact CETCI at the following address:

11 MAINTENANCE

Externally, the YESAIR requires only cleaning with a damp cloth, wiping off the exterior surface and basic inspection for obvious damage or problems. Internally, sensors should be maintained because they have a specific life span. As they age, they must be calibrated (null and span adjusted) for accuracy. If one or more sensors do not respond to span gas, check the age of the sensor as they may have expired. Refer to the sensor replacement and calibration sections of this manual for more details. Contact the factory for service to replace expired sensors or any other parts that are required.

12 TROUBLE SHOOTING

Problem 1.00: YESAIR does not communicate with YES Viewer software.

NOTE:

1. YESAIR must be switched on and have completed warm up cycle to be able to communicate with the YES Viewer software. It must be in the normal display mode indicating all installed sensors on the LCD.

Problem: YESAIR displays “PC MODE” when it is not communicating with the YES Viewer software”.

Solution:

- 1.01 Hold down the MENU button for 5-seconds to bring the YESAIR back to the main sensor display window.
- 1.02 If the YESAIR still indicates “PC MODE”, unplug the 6V adapter from the YESAIR and remove the batteries.
- 1.03 Plug the 6V adapter into the YESAIR and hold the MENU button in for 3-seconds to start the instrument. Insert the batteries when unit has started.

Disclaimer Notifications

Minimum firmware version 3.0 is compatible with software version 7.4.

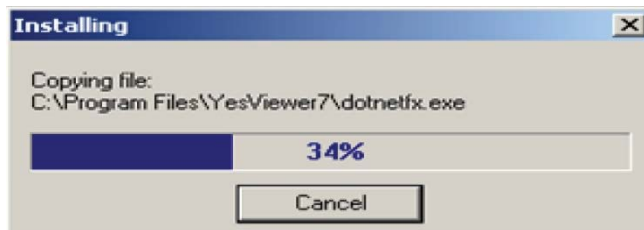
NOTE:

1. "PNP-Q" formaldehyde (CH₂O) sensor and "PNP-L" hydrogen sulphide (H₂S) have special gain and are slot position specific.

10 INSTALLING THE YES VIEWER SOFTWARE

For complete instructions on how to install the YES VIEWER Software, refer to the YES VIEWER Software Manual. The manual includes instructions on configuration, retrieving and graphing data, adjusting RH and temperature and troubleshooting.

1. Insert the supplied USB flash drive into the USB port on your computer.
2. Accept the terms and conditions.
3. Follow the instructions.
4. Finally complete the installation by clicking on Finish tab.



After Installation the YES Viewer Icon will appear automatically on your computer desktop. Double click on YES Viewer Icon on your Desktop to open the software program.

**Critical Environment Technologies Canada Inc.**

Unit 145, 7391 Vantage Way
Delta, BC, V4G 1M3
Canada

Toll Free: +1.800.940.8741
Tel: +1.604.940.8741
Fax: +1.604.940.8745
Website: www.critical-environment.com

In no event will CETCI or its officers or employees be liable for any direct, special, incidental or consequential damages resulting from any defect in any manual, even if advised of the possibility of such damages.

2 INTRODUCTION

2.1 General Description

Thank you for purchasing our YESAIR. The YESAIR is a multi-sensor, battery powered, portable air quality detection and data logging instrument designed for intermittent or continuous indoor air quality monitoring.

The YESAIR is available in a Pump model or a Diffusion model. The main difference between the two models is the method in which they sample the air. The Diffusion model works by sample air passing through the sensor openings by diffusion on the top of the unit. The Pump model works by drawing in sample air through a nozzle with an internal pump on the side of the unit.

Choose from 30 different plug and play sensor modules that can be changed in the field and are operable within minutes (accurate readings will require more time as each sensor type has a different warm up / stabilization period before they are able to perform to publish specifications). Both models are equipped with a top mounted temperature and relative humidity sensor to aid in verifying readings, providing a comprehensive indication of air quality. Information readings are written to a plug-in SD memory card providing memory storage to protect your recorded information.

Calibration and repairs are available at our manufacturing facility and through some of our authorized and trained distributors.

The YESAIR can reliably record time-based information, which can be downloaded via a USB port located on the right side of the instrument. Any computer capable of running Microsoft Windows 2000 or higher (with an available USB communications port) can accommodate the YES VIEWER Software. The YES VIEWER Software allows users to analyze and graph the data.

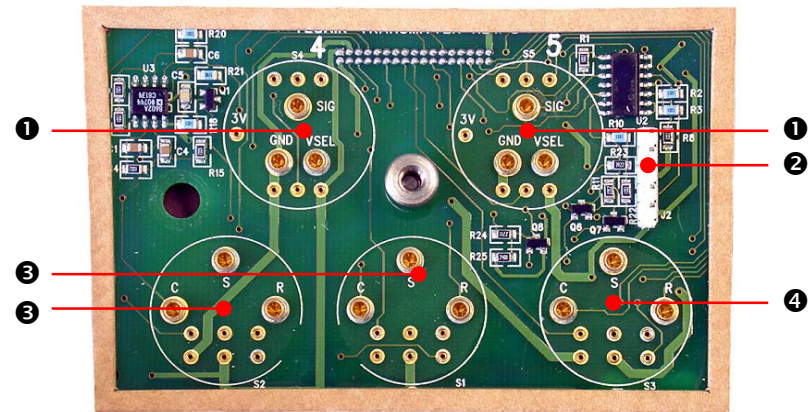
If after reading through the manual, you have any questions, please do not hesitate to contact our Service Department for technical support.



NOTE:

1. If no sensor is to be utilized in a specific sensor location, the opening must be filled with a sensor blanking plug to allow sampled air to reach all sensor locations.
2. If the newly installed sensor is not zero adjusted after installation, as outlined above, the display may indicate a slight reading of the target gas even in a clean environment.
3. For best accuracy, all sensors should be zero adjusted and bump tested after being installed.

Figure 1: Front of instrument enclosure. Looking down on transmitter circuit board.



NUMBER	DESCRIPTION
1	Carbon dioxide, PID or combustible gas sensor location.
2	Pin header for top mount temperature / RH sensors.
3	Toxic gas sensor locations, any of these three, oxygen center only. Left gas sensor location: formaldehyde (CH ₂ O) or hydrogen sulphide (H ₂ S) = resistor change
4	Toxic gas sensor locations, any of these three, oxygen center only. Toxic gas sensors required bias voltage <u>only</u> here. hydrogen sulphide (H ₂ S) with resistor change

NOTE: An instrument that is configured for nitric oxide, hydrogen chloride, ethylene oxide, hydrazine or formaldehyde cannot be swapped with a different sensor type without hardware modification and cannot be placed in any other socket than socket 3 or 1. If this change is desired, the unit needs to be sent back to the factory to be reconfigured.

The procedure to add or change a sensor is as follows:

1. Shut the instrument off. If the power adapter is plugged in, UNPLUG IT BEFORE PROCEEDING.

WARNING: LEAVING AC ADAPTER PLUGGED IN WHILE CHANGING SENSORS CAN SERIOUSLY DAMAGE SENSORS. THIS DAMAGE WILL NOT BE COVERED UNDER WARRANTY.

2. Loosen the single securing screw in the center of the sensor cover on the top of the instrument. Carefully remove the cover.
3. If you are removing a sensor, identify the one to be removed by the label on the side of the sensor then carefully grasp the sensor by the sides and pull upwards with a slight rocking motion to unplug it from the sensor sockets in the transmitter circuit board. DO NOT DROP the sensor (permanent damage could occur). The removed sensor should be stored in a clean, dry container, preferably with anti-static foam.
4. If another sensor is to be installed in its place, ensure it is of the same "type" (electrochemical, infrared, PID / Catalytic), to be accommodated by the sensor location recently vacated. Carefully grasp the new sensor by the sides and line up all of the pins on the smart sensor board attached to the bottom of the sensor with the sockets on the transmitter board. Once the pins are all aligned, gently push the sensor down into the sockets in the transmitter circuit board. If it does not seem to be easy to insert the new sensor, DO NOT FORCE it. Double check the pin to socket alignment and try again.
5. Reattach the sensor cover and tighten the securing screw. **DO NOT OVER TIGHTEN.**
6. Switch the instrument on and allow at least 20 to 30 minutes of warm up time before using.
7. Once the sensor has been warmed / stabilized, perform a zero function using the push buttons on the front of the instrument. This function is part of the calibration procedure indicated in [7.4 Alarm Menu](#). This can be performed in room air if you know the air in the environment is clean. If the sensor is CO₂ or O₂, 100% Nitrogen (N₂) must be flowed over the sensor as part of the zero function.

2.2 Contents

This checklist ensures that you have received everything required to run your IAQ monitor / logger.

If you do not receive any of the items listed below, contact the factory immediately:

- YESAIR multi-gas monitor / logger
- AC wall adapter 6 V @ 850 mA
- Nickel-metal hydride rechargeable batteries (3 x "AA")
- Calibration / probe fitting
- Operation manual
- YES VIEWER terminal data logging software (optional)
- Communications cable (optional)
- Other specified accessories (please refer to original sales order and the comments below):

DATE:

CHECKED BY:

3 INSTRUMENT SPECIFICATIONS

3.1 General Overview

YESAIR is a battery powered, portable indoor air quality monitor and information recording (data logging) instrument designed for intermittent or continuous operation. Its intended use is for indoor environments.

A basic instrument includes a multi-line LCD alpha numeric display, audible alarm, rechargeable batteries, temperature and relative humidity (RH) sensors and an Operation manual.

The YESAIR can handle up to five additional internal plug & play sensors consisting of a maximum of three electrochemical toxic gas or oxygen sensors, plus two high current draw sensors such as an infrared PID or catalytic sensor, and a remote particulate sensor such as the YESDUST. Choose from a selection of up to thirty different sensors to best suit your application specifications. Reference the list of available sensors under [4.2 Plug & Play Sensor Specifications](#).

3.2 Key Features

- Light weight, contoured and comfortable to hold.
- Flame rated ABS/Polycarbonate enclosure.
- Displays all installed sensors simultaneously on backlit LCD display.
- Multi-function, easy to use menu.
- Operates from nickel metal hydride (NiMH) rechargeable batteries (standard), or alkaline batteries, or continuously from the plug-in power adapter.
- Hangs on a wall (rear slot molded in), mounts on a camera tripod or sits on a desk.
- Accommodates a standard cable lock for securing the instrument in place.
- Samples air with internal sample draw pump or by diffusion.
- Accommodates electrochemical, catalytic, PID or infrared sensor types.
- Thirty different plug & play sensors available to choose from.
- Logs and stores information and events on a 2GB memory card
- USB data downloading and auxiliary up loading from remote probes
- XP, VISTA & Windows 7, 8 compatible

The LCD indicates the list of installed sensors. Use the ARROW DOWN button to scroll to the first sensor to be span adjusted and press the MENU button again.

The LCD moves to the "SPAN" menu and indicates "SPAN GAS VALUE". The cursor flashes over the first of four digits indicating the user must set the correct span gas value. This value must match the gas concentration on the cylinder of span gas for that specific sensor. Use the ARROW UP, ARROW DOWN and MENU button to set the span gas value then press the MENU button. If the span gas concentration is 50 (example) the value should read "050.0".

The LCD moves to the SPAN menu and indicates "APPLY GAS NOW..." A scroll bar at the bottom of the LCD indicates the progress on a scale of 0 to 100% as the instrument waits for sensor to stabilize to the span gas. Then the LCD indicates "SPANNING CO". Once again the scroll bar at the bottom of the LCD indicates the span progress on a scale of 0 to 100%. Upon completion, the LCD indicates "SPAN HAS BEEN UPDATED" and goes back to the "CAL" menu.

Repeat this procedure for all installed sensors.

NOTES:

1. If the user neglects to flow 100% Nitrogen over CO₂ and O₂ sensors or zero air over all other sensors, the instrument indicates an error.
2. The O₂ sensor does not indicate the first span menu screen (APPLY GAS NOW). For this reason, ensure any Oxygen span gas utilized is connected and flowing to the sensor before entering the span menu. Alternatively, use the ambient environment as a source of 20.9% volume O₂ but make sure you do not exhale in the direction of the pump inlet fitting. The CO₂ you exhale will influence the value of the Oxygen reading. It is the only sensor that skips the first span calibration menu screen.

9 ADDING OR CHANGING PLUG & PLAY SENSORS

The YESAIR accommodates up to seven sensors. Two of those sensors are temperature and relative humidity and these sensors are permanently installed in all instruments as a standard. Five of the sensor locations accommodate only gas sensors. Three of the sensor locations visible along the back edge of the sensor cover accommodate only electrochemical toxic gas and/or Oxygen sensors. There are two sensor locations located along the front edge of the sensor cover. Each of the two front edge sensor locations can accommodate either the infrared CO₂ sensor, the PID sensor or the catalytic combustible (flammable) gas sensor. See photo reference of [Figure 1: Transmitter Circuit Board](#).

All YESAIR gas sensors are plug and play smart sensors. They can be added or changed at any time.

The LCD indicates “APPLY GAS NOW...” A scroll bar at the bottom of the LCD indicates the progress on a scale of 0 to 100% as the instrument waits for sensor to stabilize to the span gas. Then the LCD indicates “SPANNING CO₂”. Once again the scroll bar at the bottom of the LCD indicates the span progress on a scale of 0 to 100%.

Upon completion, the LCD indicates “ENTER 2nd GAS VALUE” and cursor flashes over the first of four digits indicating the user must set the correct 2nd span gas value approximately 2,000 ppm. This value must match the gas concentration on the cylinder of span gas for that specific sensor, and then press the MENU button.

The LCD indicates “APPLY GAS NOW...” A scroll bar at the bottom of the LCD indicates the progress on a scale of 0 to 100% as the instrument waits for sensor to stabilize to the span gas. Then the LCD indicates “SPANNING CO₂”. Once again the scroll bar at the bottom of the LCD indicates the span progress on a scale of 0 to 100%. Upon completion, the LCD indicates “ENTER 3rd GAS VALUE” and cursor flashes over the first of four digits indicating the user must set the correct 3rd span gas value approximately 4,000 ppm. This value must match the gas concentration on the cylinder of span gas for that specific sensor, and then press the MENU button.

The LCD indicates “APPLY GAS NOW...” A scroll bar at the bottom of the LCD indicates the progress on a scale of 0 to 100% as the instrument waits for sensor to stabilize to the span gas. Then the LCD indicates “SPANNING CO₂”. Once again the scroll bar at the bottom of the LCD indicates the span progress on a scale of 0 to 100%. Upon completion, the LCD indicates “SPAN HAS BEEN UPDATED”.

NOTE:

1. If for any reason user doesn't want all three points' calibration then it can be overridden by pressing & hold ARROW UP button till new screen will appears.

8.4 Calibration Process: 1-Point Span

First complete the zero calibration procedure as indicated in [8.2 Calibration Process: Zero](#).

Next, press the MENU button on the instrument to enter the main menu. Using the ARROW DOWN button scroll down to “CALIBRATE” and press the MENU button. The LCD will indicate “(CODE) ENTER SECURITY CODE”. The calibration function is security code protected to prevent unauthorized personnel or personnel that have not been trained, from performing this important function.

Enter the security code correctly and the LCD indicates “CAL”. Using the DOWN ARROW scroll to “SPAN” and push the MENU button. The next menu indicates installed gas sensors.

3.3 Technical Specifications

MECHANICAL

Enclosure	Rugged ABS / Polycarbonate (UL94 rated)
Weight	567 g (20 oz)
Size	7.8" x 3.1" x 3.9" (197 mm x 78 mm x 98 mm)

ELECTRICAL

Power	Standard	Rechargeable 3.6 V NiMH battery pack (8 hours continuous operation time c/w plug-in battery charger / wall adapter (100 - 240 V, 50 - 60 Hz).
		Note: A “protection diode” in the circuit provides safety protection when the batteries are accidentally inserted with reversed polarity.
	Optional	Alkaline AA batteries x 3 See section 6.3 Battery & Battery Warning .
Sampling	Continuous	Plug-in, 6VDC, Class-III, 2 A DC max. wall adapter
	Pump Model	Internal, automatic sample pump draws in sample of target environment.
	Diffusion Model	Sample air is diffused naturally over the sensors for quick, direct reading.
Memory		> 1 million data points data logging to SD memory card (optional)
Calibration		Automated through keypad
Information Recording		12 bit, multi-channel, user configurable with removable 2GB SD memory card.
		Optional YES Logger package includes: 2GB SD memory card and card reader, 6 foot USB cable and YES VIEWER software.
Circuit		Microprocessor, user configurable.

Communication	Miniature USB port for changing settings and configuring logging functions and auxiliary port for using additional sensors (i.e. YESDUST)
---------------	---

USER INTERFACE

Display	Back-lit, multi-line LCD alphanumeric display
Buttons	3 tactile push buttons for user access
Audible	Internal 80 Db @ 4'. One set point adjustment. Audible can be switched off through menu.

ENVIRONMENTAL *(sensor dependant)*

Operating Temperature	5°C to 50°C (41°F to 122°F)
Operating Humidity	0 - 99% RH non-condensing
Storage Temperature	-20°C to 60°C (-4°F to 140°F)
Storage Humidity	0 - 99% RH non-condensing

CERTIFICATION

CE Certified	CE standards for safety:	I.S. EN61010-1:2001 (Ed.2)
	CE standards for emissions:	EN 50270:2006
	CE standards for immunity:	EN 50270:2006

FEATURES

- Removable sensor cover (top of enclosure)
- Removable battery cover (bottom of enclosure)
- Threaded insert (bottom of enclosure) to accommodate a camera tripod
- Slot for cable lock (right side bottom)
- Slot at the upper rear to allow instrument to hang on a wall
- Openings at front top left for audible sounder

USAGE

The YESAIR is a portable, battery powered instrument designed for handheld use. Other uses include:

- 1 Mounting on a standard camera tripod via the threaded brass fitting molded into the base of the instrument (Reference photo in [5.2 Bottom View](#)).
- 2 Wall mounting via the slot of upper rear portion of the instrument enclosure. (Reference photo in [5.4 Rear View](#)).

NOTE:

1. If the user neglects to flow 100% Nitrogen over CO₂ and O₂ sensors or zero air over all other sensors, the instrument indicates an error.

Selecting the span procedure is the same as selecting the zero procedure. Simply use the ARROW DOWN button to scroll to "SPAN" then push the MENU button to select. From the "CAL" menu, use the ARROW DOWN button to scroll to the desired sensor then push the MENU button to select. The LCD indicates "SPAN" and the sensor selected and the gas value last used to span the selected sensor. Using the ARROW UP and / or ARROW DOWN button to set the value, one digit at a time. Next press the MENU button and the LCD indicates "SPAN" and "APPLY GAS NOW" and the bar along the bottom of the LCD indicates the progress.

NOTE:

1. Pressing the MENU button during the first stage of this procedure results in a cancelation of the span procedure.

8.3 Calibration Process: 3-Point Span

YESAIR now provides 3 point span calibration for infrared CO₂ and infrared CH₄ percent volume range sensors ONLY, to provide the maximum accuracy. First complete the zero calibration. Next, the following steps guide you through the 3-point calibration procedure. For ALL other sensors, follow the single point calibration procedure indicate right after the 3-point calibration procedure.

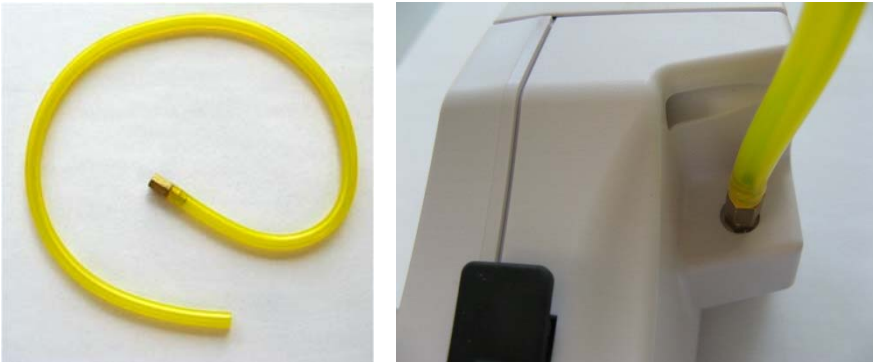
Press the MENU button on the instrument to enter the main menu. Using the ARROW DOWN button scroll down to "CALIBRATE" and press the MENU button. The LCD will indicate "(CODE) ENTER SECURITY CODE". The calibration function is security code protected to prevent unauthorized personnel or personnel that have not been trained, from performing this important function. **Default Security code = 1234**

Enter the security code correctly and the LCD indicates "CAL". Using the DOWN ARROW scroll to "SPAN" and push the MENU button. The next menu indicates installed gas sensors.

The LCD indicates the list of installed sensors. Use the ARROW DOWN button to scroll to the CO₂ sensor and press the MENU button again.

The LCD moves to the "SPAN" menu and indicates "ENTER 1ST GAS VALUE". The cursor flashes over the first of four digits indicating the user must set the correct 1st span gas value approximately 1000 ppm. This value must match the gas concentration on the cylinder of span gas for that specific sensor, and then press the MENU button.

**Procedures for Pump Model:
Product Code: CAL-ACC-KIT**



Attach the cylinder flow regulator to the cylinder of 100% Nitrogen. Attach the end of the tubing of the CAL-ACC-KIT into the regulator. Open the valve fully and attach the brass fitting of the CAL-ACC-KIT onto the inlet fitting of the YESAIR.

**Procedures for Diffusion Model:
Product Code: CAL-ACC-KIT-D**



Attach the cylinder flow regulator (0.5-LPM) to the cylinder of 100% Nitrogen. Attach the end of the tubing of the CAL-ACC-KIT into the regulator. Open the valve fully and attach rubber plug of the CAL-ACC-KIT-D into the appropriate sensor cover opening of the YESAIR.

Repeat this procedure for all installed sensors.

- Instrument will easily accommodate sitting on a flat surface such as a desk top.

Minimum System Requirements to Operate Datalog Recording Software (YES Viewer Software):

- Personal computer with Pentium III class processor or better
- Minimum 512MB RAM (more is better), Windows compatible
- A hard disk with at least 1 MB of available disk space. Additional space is required to store logger files and graph files.
- USB port

3.4 Enclosure Dimensions



4 SENSOR SPECIFICATIONS

4.1 Sensor Configuration Notes

The YESAIR has the capacity for 7 internal sensors – one temperature sensor, one RH sensor and 5 plug and play gas sensors.

In addition, it can be connected to a YES DUST via the auxiliary port. The YES DUST is a general purpose particulate sensor that counts particulates between 1 and 10 microns in size. It should not be used in clean room applications. The YESDUST uses the YESAIR's data logging capabilities to record data and adds this information to the log file along with the YESAIR's data records. If you would like more information on the Yes Dust please visit our website.

The YESAIR has plug and play smart sensors and placement of those sensors is an important consideration. With the display facing you, look at the top of the YESAIR and you will see five gas sensor sockets. The three sockets closest to the back edge are for electrochemical toxic gas sensors, with the socket 2 configured specifically for an Oxygen sensor. Sockets 4 and 5 towards the front edge are for CO₂, PID or combustible gas sensor types. If a nitric oxide (NO) sensor requiring electronic bias within the circuit is used, it must be fitted to one specific sensor location (left rear position, determined by looking at the front of the instrument). Two sensors requiring bias cannot be fitted in the same instrument at the same time. Reference the photo in [Figure 1: Transmitter Circuit Board](#) in Section 9 ADDING OR CHANGING PLUG AND PLAY SENSORS for specific sensor locations.

Sensors can be added or changed as required. However, an instrument that is configured for nitric oxide, hydrogen chloride, ethylene oxide, hydrazine or formaldehyde cannot be swapped with a different sensor type without hardware modification and cannot be placed in any other socket than socket 3 or 1. If this change is desired, the unit needs to be sent back to the factory to be reconfigured.

It is also important to note is that sticky gas sensors such as chlorine, hydrogen chloride or ozone can only be used with the Diffusion model.

4. Cylinders of Nitrogen and appropriate span gases are required for calibration. Ensure the cylinder regulator has a minimum flow rate of 0.5 LPM to a maximum of 1.0 LPM. The pump inside the YESAIR must not be “drawn down” because of a low flow rate from a cylinder regulator. The result will be inaccurate calibration values. Span gas values should preferably be approximately 40% to 60% of the installed sensor measurement ranges. Always remove cylinder regulators from air and gas cylinders before storing.

8.2 Calibration Process: Zero

Press the MENU button on the instrument to enter the main menu. Using the ARROW DOWN button scroll down to “CALIBRATE” and press the MENU button. The LCD will indicate “(CODE) ENTER SECURITY CODE”. The calibration function is security code protected to prevent unauthorized personnel or personnel that have not been trained, from performing this important function.

Enter the security code correctly and the LCD indicates “CAL” and the next menu selections “PREVIOUS”, “SPAN” “ZERO”.

NOTE:

1. If incorrect code is input the LCD INDICATES “INVALID SECURITY CODE ENTERED” and the user is taken back to the basic menu.

Use the ARROW DOWN button to scroll down to the desired function and press the MENU button to select it. The LCD then indicates “PREVIOUS”, “ALL” and lists all installed sensors. Use the ARROW DOWN button to scroll to the desired sensor then push the MENU button to select. The LCD then indicates “ZERO” and “APPLY GAS NOW”. A bar along the bottom of the LCD indicates the progress. At 100% it indicates “ZEROING SENSOR” and another bar indicates the progress. Upon completion, the LCD indicates “ZERO HAS BEEN UPDATED” and the LCD returns to the “CAL” menu.

CO₂ LCD indicates sensor serial number, sensor date code, and calibration information: span and zero dates

To access this information, scroll down to the desired sensor choice and using the ARROW DOWN button and press the MENU button. Once the information has been viewed, press the MENU button to return to the previous menu.

7.6 USB Menu

This menu item allows the user to reset the USB chip if any problems are experienced while trying to communicate with YES Viewer software. After selecting RESET from this menu, the user will receive the message "USB HAS BEEN RESET"

NOTE:

1. If you remove the USB cable before shutting down the "YES Viewer" program, the YESAIR may continue to display "PC Mode". Press and hold the MENU button to clear this and return to normal measurement mode.

8 CALIBRATION PROCEDURES

This section details the calibration procedure and is an extension of the description from [7.1 Calibrate Menu](#) of this manual.

NOTE:

1. Calibration should always be performed by a trained and experienced technician. Temperature and Relative Humidity sensors must be calibrated using a special chamber and therefore field calibration is not permitted. Only gas sensors can be field calibrated.

8.1 Requirements & Cautions

1. Always ensure batteries are fully charged (if rechargeable batteries are installed) or fresh alkaline batteries are installed. This is especially important when calibrating sensors that are more "current hungry" such as infrared, combustible and PID for TVOCs.
2. Allow a twenty (20) minute warm up period before attempting calibration of any gas sensors. This allows all sensors time to fully warm up and stabilize and produces the most accurate results for calibration.
3. 3) Always perform both zero (null) and span functions on all sensors. Zero function involves flowing 100% Nitrogen into the inlet port of the instrument.

4.2 Plug & Play Sensor Gas Types

SENSOR	TYPE	RANGE	PRODUCT CODE
Ammonia (NH ₃)	EC	0 - 50 ppm	PNP-H
Arsine (AsH ₃)	EC	0 - 2 ppm	PNP-R
Carbon dioxide (CO ₂)	IR	0 - 5,000 ppm	PNP-A+
Carbon dioxide (CO ₂)	IR	0 - 10,000 ppm	PNP-A1
Carbon dioxide (CO ₂)	IR	0 - 20% volume	PNP-A2
Carbon dioxide (CO ₂)	IR	0 - 5% volume	PNP-B
Carbon dioxide (CO ₂)	IR	0 - 100% volume	PNP-B1
Carbon monoxide (CO)	EC	0 - 50 ppm	PNP-C
Carbon monoxide (CO), (H ₂ compensated for use in H ₂ background)	EC	0 - 50 ppm	PNP-C1
Chlorine (Cl ₂) *	EC	0 - 5 ppm	PNP-I
Chlorine dioxide (ClO ₂)	EC	0 - 1 ppm	PNP-J
Combustibles	CAT	0 - 100% LEL	PNP-X
Ethylene (C ₂ H ₄)	EC	0 - 200 ppm	PNP-E1
Ethylene oxide (C ₂ H ₄ O)	EC	0 - 20 ppm	PNP-E2
Fluorine (F ₂) *	EC	0 - 2 ppm	PNP-S
Formaldehyde (CH ₂ O)	EC	0 - 10 ppm	PNP-Q
Hydrogen (H ₂)	EC	0 - 1,000 ppm	PNP-K
Hydrogen chloride (HCl) *	EC	0 - 30 ppm	PNP-M
Hydrogen cyanide (HCN)	EC	0 - 100 ppm	PNP-N
Hydrogen fluoride (HF) *	EC	0 - 10 ppm	PNP-O
Hydrogen sulphide (H ₂ S)	EC	0 - 50 ppm	PNP-L
Nitric oxide (NO)	EC	0 - 100 ppm	PNP-E
Nitrogen dioxide (NO ₂)	EC	0 - 5 ppm	PNP-D
Oxygen (O ₂)	EC	0 - 25% volume	PNP-F
Ozone (O ₃) *	EC	0 - 1 ppm	PNP-G
Phosphine (PH ₃)	EC	0 - 1 ppm	PNP-V

Silane (SiH ₄)	EC	0 - 50 ppm	PNP-W
Sulphur dioxide (SO ₂)	EC	0 - 20 ppm	PNP-P
TVOCs	PID	0 - 300 ppm	PNP-Y+
TVOCs	PID	0 - 30 ppm	PNP-Z+

Legend:

EC	Electrochemical
SS	Solid State
CAT	Catalytic
IR	Infrared
PID	Photo Ionization Detector

NOTES:

1. Not all of the above sensors are available from stock. Delivery time for sensors ordered will vary depending on which sensors are ordered, how many are ordered and measurement range desired.
2. Other measurement ranges are available for some sensors. Contact factory with desired range to confirm availability.
3. Some of these sensors must be calibrated with correlation gases because they are more readily available. If the customer wishes them to be calibrated with the exact target gas, extra charges will apply to acquire the specific gas if and when available. In these cases, customer will be required to take delivery of the special cylinder of span gas and dangerous goods and shipping costs will apply.
4. Some of the above sensors have cross sensitivities to other gases (interfering gases). Please refer to the sensor specification chart before ordering a specific sensor if your application may have some of the interfering gases present.
5. * These sensors are available with the Diffusion model only.

NOTE

Other sensors may be indicated here. Only installed sensors will be on this list. Pressing the MENU button at any of the sensors listed, puts an asterisk in front of the gas name, indicating it has been selected to activate the audible alarm if real-time gas values are above preset alarm levels.

SET ALARM

This menu item allows the user to enter an alarm set point for any installed sensor. The user must first enter a four digit security code. Use the UP ARROW or DOWN ARROW and MENU buttons to enter the desired numbers of the security code. When finished push the MENU button and the LCD will accept the code if it was entered correctly and display the list of installed sensors

Using the ARROW DOWN button, scroll down to the first sensor that you wish you enter an alarm set point for then push the MENU button. The display will indicate "ENTER ALARM VALUE". Use the ARROW UP and / or ARROW DOWN buttons to enter the desired numbers then press the MENU button to accept the new value. The LCD will indicate "NEW ALARM VALUE ENTERED" and go back to the list of installed sensors.

Once again, use the ARROW DOWN button to scroll down to the next sensor that is to have an alarm set point and repeat the procedure. Each time the MENU button is pressed to accept the new alarm set point, the LCD will go back to the list of sensors and the default cursor position is "PREVIOUS". When finished, press the MENU button at "PREVIOUS" and the alarm menu will be displayed.

7.5 Info Menu

This menu item provides the user with information about the instrument. The choices are for the instrument and installed sensors with serial numbers (does not include temperature and RH sensors as they do not have serial numbers).

Examples of choices are:

MONITOR
CO
CO₂

MONITOR LCD indicates instrument serial number and date of manufacture.

CO LCD indicates sensor serial number, sensor date code, and calibration information: span and zero dates

CO
CO₂

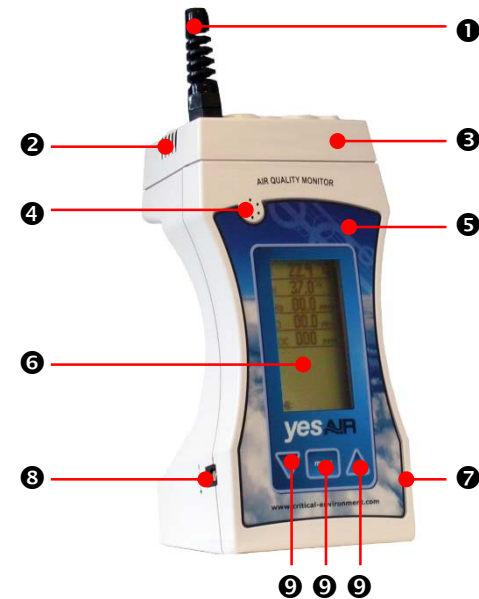
- NOTE** Only installed sensors show on this menu, eg. CO, CO₂, etc. This menu will only display temperature and RH sensors if an alarm point has been set for them. Go to “SET ALARM” to reference setting alarm set points.
- OFF** This menu item removes all asterisks in front of all sensors listed (installed) indicating they have been de-selected and will not be included in the alarm set list. Press the MENU button at this menu item and the LCD indicates “ALARM SET UP HAS BEEN SAVED”. The display then goes back to the alarm menu screen.
- ALL** This menu item puts an asterisk in front of all sensors listed (installed) indicating they have been selected to have an alarm set point. Press the MENU button at this menu item and the LCD indicates “ALARM SET UP HAS BEEN SAVED”. The display then goes back to the alarm menu screen.

7.4 Alarm Menu

- NEXT** Select next after you have highlighted only the sensors you want to have alarm set points for. Press the MENU button at this menu item and the LCD indicates “ALARM SET UP HAS BEEN SAVED”. The LCD then goes back to the alarm menu.
- TEMP** This menu item puts an asterisk in front of the temperature sensor (installed) indicating it has been selected to have an alarm set point
- HUMIDITY** This menu item puts an asterisk in front of the humidity sensor (installed) indicating it has been selected to have an alarm set point.
- CO** This menu item puts an asterisk in front of the CO sensor (installed) indicating it has been selected to have an alarm set point
- CO₂** This menu item puts an asterisk in front of the CO₂ sensor (installed) indicating it has been selected to have an alarm set point.

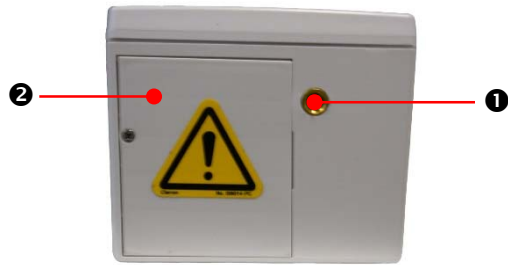
5 FEATURES & FUNCTIONS

5.1 Front View



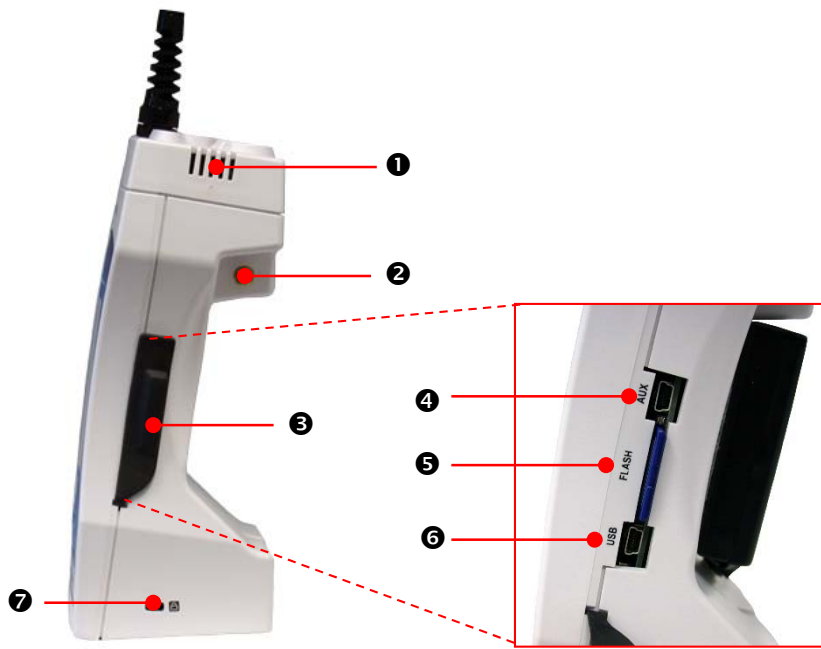
NUMBER	FEATURE	FUNCTION
1	Temperature / RH Sensor Shroud	Protects from everyday ruggedness and responds quicker to changes in RH and temperature.
2	Air Vents	For venting heat build-up from internal sensors.
3	Sensor Cover	Protects sensors from everyday ruggedness
4	Audible Alarm	
5	Lexan Label	
6	Digital Display	User interface; Multi-line, back-lit, LCD, alphanumeric display
7	Cable Lock Slot	Located lower down on the side
8	Plug-in Wall Adapter Slot	For continuous operation. 6 VDC only.
9	Keypad	3 tactile push buttons to maneuver through display menu.

5.2 Bottom View



NUMBER	FEATURE	FUNCTION
1	Brass Thread	For camera tripod mounting
2	Battery Lid	Holds batteries in

5.3 Left Side View



this item and the LCD indicates “DATA LOG HAS BEEN ENABLED”

NOTES:

1. Once the data logger has been set up, it will not start until “ACTIVATE” has been selected from the DATALOG menu.
2. If the user experiences an error message “MEMORY CARD CORRUPT”, the SD card must be formatted with a PC using Windows FAT32 file system.
3. If memory card is not installed before “activate” is selected, the user will experience an error message “PLEASE INSTALL MEMORY CARD”. The display will then flip back to the data log menu, awaiting further instructions.
4. DO NOT use a memory card with a capacity larger than 2GB.

STOP LOG

This menu item allows the user to turn off the data log session. Press the MENU button at this item and the LCD indicates “DATA LOG HAS BEEN STOPPED”.

LOCATION

This menu item allows the user to enter names or identifiers (alpha / numeric) for up to six locations for logging purposes. Names are limited to eight characters.

Example:
 NONE
 SETUP
 KOREA (EXAMPLE)

MEM CARD

This menu function provides the user with information about the memory card and a function to format a new card.

INFO

This menu function indicates the size of the SD card memory and the number of CSV files stored, if any.

ALARM

This menu item allows the user to set up alarm set points that would activate the audible alarm. The menu choices are:
 ALARM
 SET ALARM

The menu choices at this point are:
 OFF
 ALL
 NEXT...

change all parameters of the information gathering if desired for customizing it to their application. The LCD indicates "DEFAULT SETUP HAS BEEN SAVED"

DEFAULT SETUP 1 min sample rate, Start logging on startup, End logging when file full, Location = NONE

SET UP This menu item allows the user to select the sampling rate. Seven sampling rates are available to choose between, from once every 10-seconds to once every 30-minutes.

Sampling rates available: 10-secs, 30-secs, 1-min, 2-min, 5-min, 15-min, 30-min. After the sampling rate has been selected, the logger START method must be selected: "STARTUP" or "SET TIME".

STARTUP Logging will start when the YESAIR is turned on and ACTIVATE has been selected from the DATALOG menu

SET TIME User can set the time and date to start logging.

After the START method has been selected the END method must be selected: "FILE FULL", "FIXED", or "SET TIME"

FILE FULL Logging will stop when the SD card memory is full.

FIXED User selects how many samples to take before logging is stopped.

SET TIME User can set the time and date to stop logging.

After the END method has been selected, the logging location must be selected. The selections available in the "LOC" (location) menu are:

NONE
 SETUP
 <EMPTY>
 <EMPTY>
 <EMPTY>
 <EMPTY>
 <EMPTY>
 <EMPTY>

Choosing NONE will not set a location for logging.

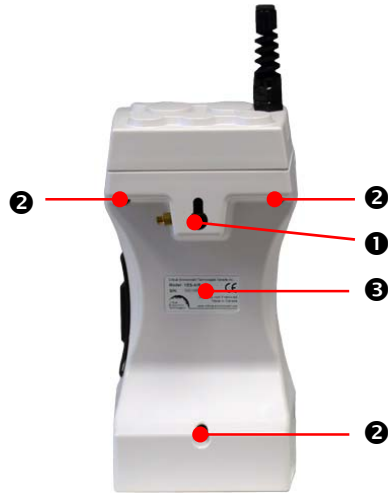
ACTIVATE This menu item allows the user to enable the data log (information recording) session. Press the MENU button at

NUMBER	FEATURE	FUNCTION
①	Air Vents	For venting heat build-up from internal sensors.
②	Pump Inlet Fitting	Connects the flow adapter. Requires only one turn of the fitting. Pump model only.
③	Rubber Boot Cover	Covers the USB download slot, auxiliary upload slot and SD memory card slot for data logging.
④	Auxiliary Port	For remote probes.
⑤	Memory Card Slot	Holds the 2GB SD memory card
⑥	USB Port	For downloading data to the computer.
⑦	Cable Lock Slot	Secures cable lock similar to what is typically used for laptop computers.

NOTE:

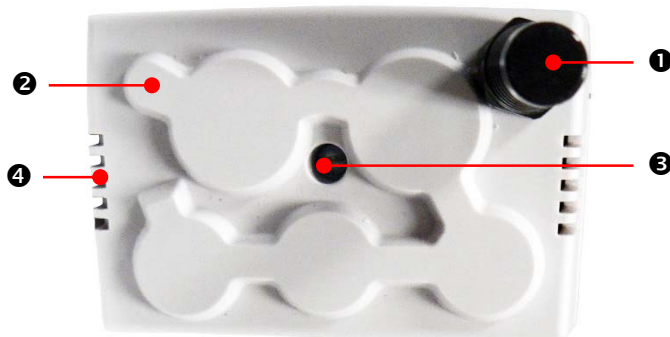
1. The YESAIR can only accommodate up to a 2GB memory card. It is inadvisable to try to use a larger capacity memory card. Also, if you remove or insert the card without powering the unit OFF, this will cause data corruption and the card will need to be reformatted.

5.4 Rear View



NUMBER	FEATURE	FUNCTION
1	Molded Slot	For hanging instrument on wall.
2	Access Holes	Access to screws holding front & rear enclosure halves together. Three in total.
3	Label	Identifies the model and serial number.

5.5 Top View with Sensor Cover



are listed as: “ONE, TWO, THREE, FOUR, FIVE, SIX, SEVEN”. Using the ARROW DOWN button, scroll down to the desired value and push the MENU button to accept.

PUMP

This menu item allows the user to select “REG FLOW” (regular flow) or “HIGH FLOW” for the pump. Regular flow sets the pump flow rate to approximately 0.5 LPM default. High flow increases the flow rate and should be used when a hose and probe is attached. The higher flow rate helps to overcome the resistance of the hose and probe to maintain at least 0.5 LPM flow into the instrument. Using the ARROW DOWN button, scroll to the desired setting and push the MENU button to accept.

PASSCODE

This menu item allows the user to set a security pass code to prevent other people from changing the instrument settings. Pressing the MENU button at this option takes the user to the pass code set up screen. The user is required to enter the existing pass code first. Use the ARROW UP or ARROW DOWN buttons to input the existing pass code then push the MENU button. The display then indicates it is ready for a new pass code to be entered. Use the ARROW UP or ARROW DOWN buttons to set the desired numbers for a pass code. Pressing the MENU button at this point saves the new pass code. With the display indicating “NEW PASS CODE HAS BEEN SAVED”.

DEFAULT

This menu item allows the user to quickly set up the instrument operating parameters. Pressing the MENU button at this menu function saves the default settings and the following message appears on the LCD: “DEFAULT SET UP HAS BEEN APPLIED”.

7.3 Datalog Menu

This menu item allows the user to set up the information gathering (data logging) function that instructs the microprocessor what and how to write information to the SD memory card. The selections are: “DEFAULT”, “SET UP”, “ACTIVATE”, “STOP LOG”, “LOCATION”, “MEM CARD”.

DEFAULT

This menu item provides the end user with a quick set up option for the data logging function. It sets up basic parameters for the information gathering function. The end user can still enter other menus to manually set up or

down to the battery type desired and press the MENU button to accept.

KEYPAD

This menu item allows the user to leave the keypad operational for anyone using the instrument or lock it so the settings cannot be changed by anyone. A lock symbol appears at the bottom of the LCD display to indicate the keypad lock has been engaged. Anyone trying to use the keypad will encounter a display requesting a four digit security code. The selections are “NORMAL” or “LOCKED”. The instrument is supplied with a generic security code for all lockable functions. It is “1, 2, 3, 4”. Using the ARROW DOWN button, scroll down to the desired selection and press the MENU button to accept.

DISPLAY

The menu item provides the user with four settings that can be adjusted for the LCD, alpha-numeric, digital display. “BACKLIGHT”, “NORMAL”, “BLANK”, “CONTRAST”.

BACKLIGHT

This menu item allows the user to set the LCD display backlight to ON or OFF. Switching it off saves on battery power. Use the ARROW DOWN button or ARROW UP button to scroll to the desired setting (ON or OFF) and press the MENU button to make the change. Once the backlight has been switched “ON” through the menu, it will remain on for about 30-seconds. After that, the user can then push any button momentarily to activate the backlight for short periods of time. The backlight will remain on for 30-seconds with each activation from an arrow button then automatically turn off to save battery power.

NORMAL

This menu item sets the display to the normal view of all installed sensors and their real time gas values. Example: If a user has blanked the LCD display or locked the keypad to prevent tampering, the “normal” function resets everything.

BLANK

This menu item allows the user to “blank” the LCD display so nobody can view the real time readings. This does not affect the data logging function at all. Using the ARROW DOWN button, scroll to the desired setting and push the MENU button to accept. The LCD goes completely blank. To view the LCD display again, push the MENU button and you will be required to enter the security code.

CONTRAST

This menu item allows the user to adjust the contrast of the LCD display. There are seven settings available and they

NUMBER	FEATURE	FUNCTION
①	Temperature / RH Sensor Shroud	Protects from everyday ruggedness and responds quicker to changes in RH and temperature.
②	Outlet Hole	For sampled air. Do not plug this hole.
③	Securing Screw	For sensor cover. Do not over tighten.
④	Air Vents	For venting heat build-up from internal sensors.

NOTE:

1. The outlet hole allows the sampled air to escape. It is important to make sure this outlet is not blocked or plugged as any time. Similarly, the air vents on either side of the top surface allow heat build-up from the sensors to escape and should remain clear at all times.

5.6 Top View Diffusion vs Pump Model

The Diffusion model works by sample air passing through the sensor openings by diffusion on the top of the unit. The Pump model works by drawing in sample air through a nozzle with an internal pump on the side of the unit.

6 OPERATION

6.1 Overview

The YESAIR has an extensive menu system allowing the user to access a wide range of features and functionality. All features and functions can be set to meet the user's specific requirements.

BUTTON PRESSING The three membrane push-buttons on the front face of the instrument should be pressed firmly and slowly. They have been designed such that an accidental light touch does not register and change something the user may be working on. Use the menu button to select and the up and down arrows to scroll through the menu items. The menu items can also be set using the YES Viewer Software installed on a computer.

SECURITY CODE Some functions within the menu system are protected by a security code to prevent unauthorized or untrained personnel from accessing them and changing critical values within the instrument that might produce incorrect or unsafe readings. All YESAIR instruments are shipped from the factory with a generic security code of "1, 2, 3, 4". It is recommended the user change this to a code known only to authorize personnel.

6.2 Switching Instrument On & Off

IMPORTANT NOTE:

Both YESAIR models are supplied with a power adaptor — for correct operation the unit must be plugged in and turned off when not in use. Instruments not kept plugged in will exhibit long sensor warm up times. Sensor life will be shortened if this procedure is not followed. If alkaline batteries are used confirm menu setting has been changed to correct setting.

When using push-buttons on front of instrument enclosure, press firmly and watch the display for movement. A light finger press will not engage the domed contact. This is to prevent accidental changes to the menu.

SWITCH ON Press "MENU" button down momentarily then release. The multi-line LCD will scroll through each of the information functions as it warms up.

SWITCH OFF Hold "MENU" button down for five to six seconds then release. The multi-line LCD will indicate "Shutting monitor off".

The choices are:

TEMP
RH
VOC (TVOCs)

TEMP: The options available are:

DEGREES C
DEGREES F
ADJUST
DISABLE

This menu item allows the user to change the temperature unit from degrees C to degrees F or vice versa. The second function allows the user to adjust the temperature value slightly to align it with another device. The third function allows the user to adjust the RH value slightly to align with another device. The choice is -1% or +1% RH. The fourth function allows the user to disable the temperature reading.

Temperature adjust This menu allows the user to "tweak" the displayed temperature value slightly (± 1 degree C or ± 2 degrees F). This function can only be used once to prevent excessive adjustment of temperature sensor without the use of a calibration chamber. Using the ARROW DOWN button, scroll to "ADJUST" and press the MENU button. The LCD will ask the user to input the desired numeric value. Once the last digit has been entered, the new temperature value will be automatically saved.

RH adjust Use the ARROW DOWN button to scroll to the desired choice and push the MENU button.

VOC This menu allows the user to switch the units of measure for the PID sensor only. The choices are: "PPM" or "ug/m³". **Note that the range in ug/m³ is 9999.** Using the ARROW DOWN button, scroll down to the desired unit of measure and push the MENU button to accept.

BATTERY This menu item provides the user with two different battery options that can be selected. NOTE: The YESAIR is supplied from the factory, and configured for rechargeable NiMH batteries. If the user wishes to change from one type to another (eg. Rechargeable to Alkaline), they must first make the change through the "SETTINGS" menu. Reference [6.3 Battery & Battery Warnings](#). Battery types available are: "NIMH" (rechargeable) or "ALKALINE" (disposable). Using the ARROW DOWN button, scroll

Catalytic, combustible gas sensors should be calibrated every six months for best performance.

Both zero and span functions are automated. Before span adjusting the sensor, the user must first tell the YESAIR what concentration of span gas is being used to span each sensor. This does not apply to temperature, RH or Oxygen sensors. Temperature and RH sensors must be calibrated using a controlled environment such as a chamber. With oxygen sensors, it is assumed you will use the environment around you because it contains approximately 20.9% O₂. After that, push the menu button over the zero or span selection and follow the instructions on the LCD.

NOTE:

1. For more information on calibration function, see [8 Calibration Procedure](#) of this manual.

CALIBRATION FREQUENCY

The frequency of calibration maintenance to expect best performance from installed sensors. Temperature and Relative humidity sensors should be calibrated once per year. All other toxic and combustible gas sensors should be calibrated once every six months for best performance and to meet published specifications.

7.2 Settings Menu

This menu item provides the user with the ability to configure much of the instrument functionality to suit their specific needs. Use the ARROW DOWN button to scroll to “SETTINGS” then push the MENU button to enter this menu and view the listed functions. Use the ARROW DOWN button to scroll to the function you wish to change and press the MENU button.

The functions available for modification are:

PREVIOUS
SENSORS
BATTERY
KEYPAD
DISPLAY
PUMP
PASS CODE
DEFAULT

SENSORS

This menu lists only the installed sensors that provide the user with the ability to adjust them from the menu.

Upon switch on, the LCD display indicates “YESAIR, PORTABLE AIR QUALITY MONITOR”, then “WARMING UP UNIT PLEASE WAIT...” and the inner sample draw pump starts automatically sampling the environment. A symbol at the bottom left corner of the display will indicate if the instrument is operating from batteries or the plug-in wall adapter. After warm up period (approximately 3-minutes), the LCD indicates all installed sensors and their current, real time readings and the cursor flashes.

NOTES:

1. More accurate real-time readings will occur after the sensors have warmed up and stabilized a little longer.
2. Warm-up can be skipped by holding the MENU button for 3-5 seconds

6.3 Battery & Battery Warnings

The YESAIR operates from three different power sources. Rechargeable Nickel Metal Hydride (NiMH) batteries (3 x “AA”), disposable alkaline batteries (3 x “AA”) or a plug-in wall adapter/battery charger. Reference [3.3 Technical Specifications](#). The batteries are installed in the bottom of the unit.

The YESAIR is shipped with and configured for rechargeable batteries from the factory.

CAUTION

If the user wishes to change from one type of battery to another (eg. Rechargeable to Alkaline), you must change the battery type setting in the instrument menu. This ensures that when alkaline batteries are being used, the unit will know not to try to charge them when the unit is plugged into the wall and not cause damage to the batteries or unit.

When using rechargeable batteries, in order to charge them, you have to make sure the instrument is plugged into the wall using the adapter (which doubles as a battery charger) and the unit is turned OFF. It is recommended that when the unit is not in use, you keep it turned off and plugged in. This will keep the rechargeable batteries charged, the sensors warm and reduce the time it takes for the unit to power up and be ready to use.

NOTES:

1. The battery tabs are such that even if batteries are installed by accident with reverse polarity, no damage will occur. Always take care when installing any kind of battery.
2. Instrument will not charge the NiMH batteries unless the instrument is switched off.

3. **A yellow warning label has been placed on the battery door of the YESAIR. This is to alert the user to the fact that if alkaline batteries are installed by mistake and the user attempts to recharge them with the supplied wall adapter, damage could occur. Recharging alkaline batteries could cause them to leak thus creating potential harm and / or physical damage to the instrument. DAMAGE CAUSED BY THIS TYPE OF ACTION IS NOT COVERED UNDER WARRANTY AND THE MANUFACTURER IS NOT RESPONSIBLE.**

6.4 Main Menu Function

Pressing the MENU button after the main sensor array is displayed allows the user to enter the extensive menu system. The first menu display includes:

PREVIOUS
CALIBRATE
SETTINGS
DATALOG
ALARM
INFO
USB

NOTE:

- In all cases, use the ARROW DOWN or ARROW UP buttons to scroll through any displayed menu and use the MENU button to select any highlighted choices.

PREVIOUS Allows the user to go back to the previous function. Pressing the MENU button repeatedly at "PREVIOUS" will step the user back one menu at a time until you finally reach the main sensor real-time display. Alternatively, hold down the MENU button for approximately 6 to 7 seconds and the LCD will jump back to the main, real-time sensor display.

CALIBRATE Allows the user to enter the calibration section of the menu. This section is protected by a security code to prevent unauthorized people from attempting to calibrate the sensors. Reference [8 Calibration Procedures](#).

SETTINGS This menu item provides the user with a number of instrument functions that can be set or modified to suit their personal use.

DATALOG This menu item allows the user to set up the internal data logger to suit their specific application. This function can also be achieved with the instrument connected to a computer. Set up and programming through a pc is faster but the YES VIEWER

data logging function can be completely set up through the menu in the instrument.

ALARM This menu item allows the user to set the alarm levels as well as which alarms are activated.

INFO Provides the user with information on the instrument such as serial number assigned and date of manufacture. It also provides the user with information on the installed sensors such as sensor serial number, date code, and calibration date information.

USB Allows the user to reset the USB chip if the YESAIR will not communicate with YES VIEWER software.

7 MENU FUNCTION DETAILS

7.1 Calibrate Menu

Pressing the MENU button at this menu function puts the user into the calibration section of the menu. The LCD immediately indicates "ENTER SECURITY CODE". The user must input a 4-digit security code to access the calibration menu. This prevents unauthorized users from tampering with the calibration settings. All YESAIR instruments are shipped from the factory with a generic security code setting of "1234". The user can easily change this code setting for extra security. Reference [7.2 Settings Menu](#).

NOTE:

- If the wrong security code has been entered, the display indicates "INVALID SECURITY CODE ENTERED" and the display flips back to the menu list.

The calibration menu provides the user with two main functions to calibrate all gas sensors, SPAN and ZERO. Both of these functions are required as part of the regular instrument maintenance to achieve "best performance" from the sensors. Zero function must be performed before the span function.

PID sensors for TVOCs (Total Volatile Organic Compounds) should be calibrated every three months for best performance. This sensor measures the "total" response from all VOCs in the target area and cannot identify individual gases or chemicals.

Infrared CO₂ sensors should be calibrated yearly for best performance.

Electrochemical, toxic gas sensors should be calibrated every six months for best performance.